



## **ALBIN**Energia

FOR A SUSTAINABLE FUTURE

### **ALBINI ENERGIA SRL**

Controlled by Albini Group S.p.A.



Via Silvio Albini 1  
24021 Albino (Bergamo)



+39 035 777 111



[albinenergia@albinigroup.com](mailto:albinenergia@albinigroup.com)



[albinenergia.com](http://albinenergia.com)

## **ALBIN**Energia

FOR A SUSTAINABLE FUTURE

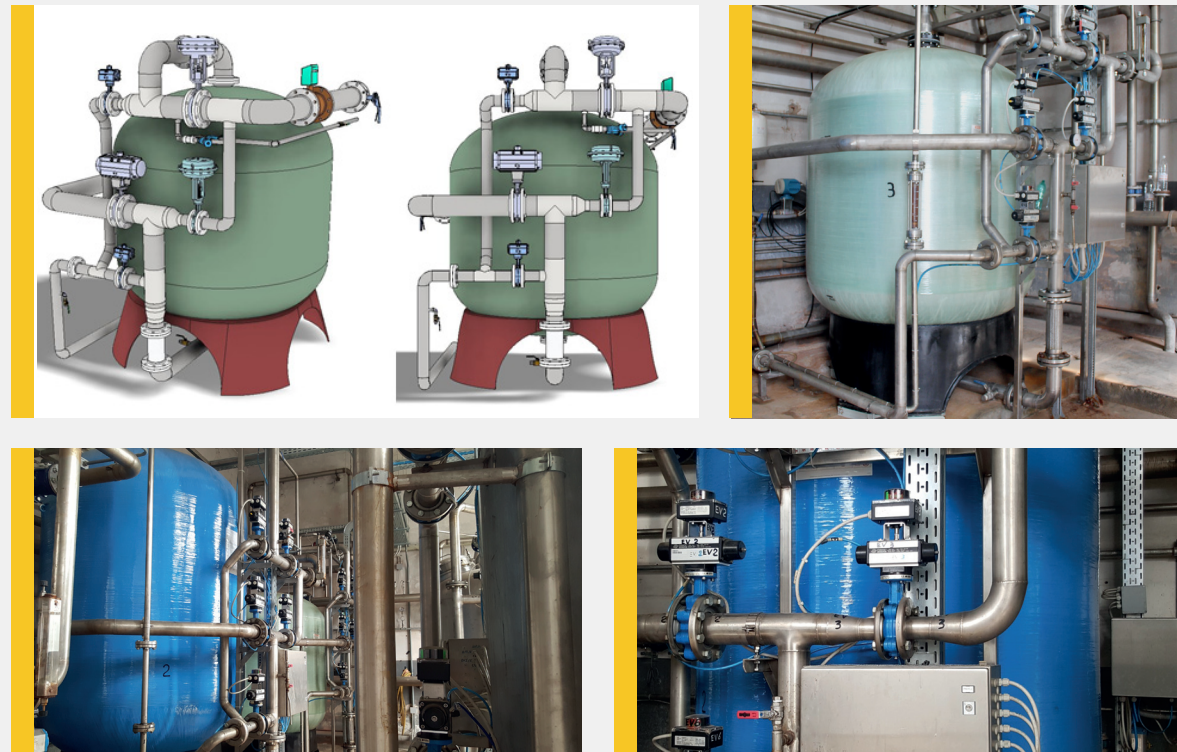
## **Water softening plants**

CLEAR WATER TREATMENT



## The water softening process

Softening is a process that removes mineral salts (mainly calcium and magnesium carbonates) from hard water. The presence of metal ions may cause limescale deposits to form on pipes and equipment which would damage the hydraulic components in the long term and corrode them.



## Our product

The Albini Energia softening system is different from other solutions on the market in that:

- The columns are made entirely of fibreglass to prevent corrosion.
- The columns have valves with a pneumatic actuator and a two limit switch box.
- Control valves regulate water flow during softening and regeneration.
- Magnetic level gauges (one on the water and one on the brine) are used to control volumes.
- Diffusion and water collection ramps inside the columns allow maximum distribution and prevent the formation of preferential channels.

## Automation system

The automation system allows maximum flexibility: customers can control the duration and volume of treated water cycles and receive an auto-diagnosis of any problems (monitoring of valve opening and closing time, etc.). If required, the system can send phone alerts.

The automation system controls filling with softened water, mixing of the brine storage tanks and the connected pump. It can also

be used to coordinate the requests sent by various softeners located on the same brine preparation station.

Customers can control system operating using tablets or smartphones.

The system has been designed to guarantee maximum ease of use and customer autonomy.



## Features and advantages

- Automatic operating system
- Fewer limescale deposits
- Reduced maintenance
- Lower energy and water consumption
- Significant cost saving
- Personalised solutions for all customers

## Technical data

<b>Flow rate</b>	15 m <sup>3</sup> /h - 100 m <sup>3</sup> /h
<b>Resin</b>	Purolite C100E

Albini Energia provides technical solutions that meet the demands and characteristics of all customers.